

# WAVEQ PRO SEQUENCING SYSTEM

The Era of Fourth-Generation Sequencing Has Arrived



WS-Q1000

 Q30+ Data Quality

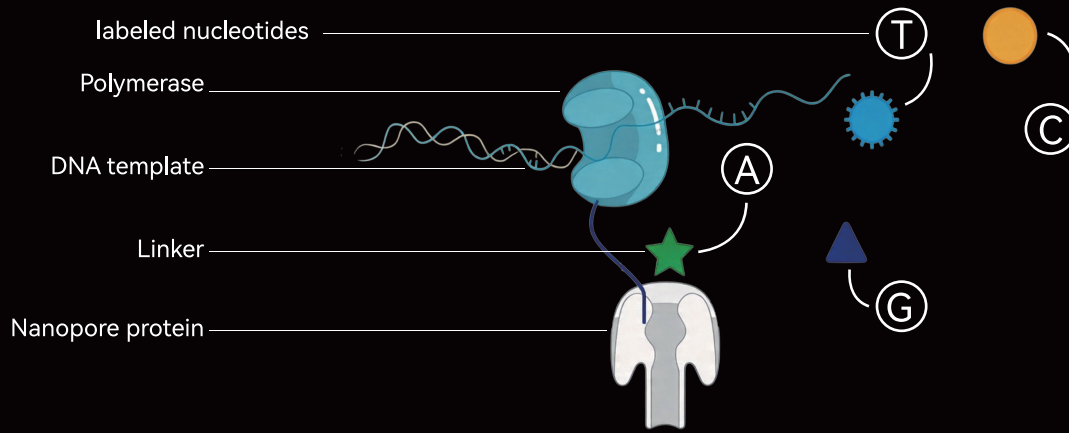
 Fast Turnaround Time

 Solid-state Flow Cell

 Effortless Operation

# I. TECHNOLOGY

The core of the Single-nucleotide Nanopore Sequencing (SNS) system consists of a nanopore protein, a DNA polymerase, a DNA template, and 4 types of free nucleotides labeled with signal linkers. During sequencing, the polymerase carries out a high-fidelity replication of the DNA template, incorporating one complementary nucleotide each time, during which, the linker attached to the nucleotide is pulled into the nanopore protein and blocks the electric current, generating a characteristic signal corresponding to each nucleotide. Using a specially trained artificial intelligence algorithm to analyze the current signal, the sequencer can obtain the nucleotide sequences of the DNA template.



# II. PRODUCT INFORMATION

## Sequencing Specifications

Single molecule accuracy	>99.9% (Q30)
Fragment length	20 bp - 15 kb
Sequencing time	10 minutes - 6 hours
Sequencing channel #	1,250,000
of sequencing run/flowcell	10 runs

## Data Output

Sequencing mode	Reads/Flow cell
Standard	>5 M
High throughput	>10 M
Short fragment	>50 M

## Device Specifications

Physical specifications	W x H x D	453 mm x 254 mm x 327 mm
	Net Weight	22 kg
Operating environment	Temperature	18°C~27°C
	Humidity	35~85% Relative humidity, non-condensing
Power supply	Voltage	100 - 240VAC
	Frequency	50 Hz
	Rated Power	450 VA(W)
Device System	CPU	Intel i9 - 13900E
	RAM	128 GB
	Hard Disk	1 TB SSD + 15.36 TB SSD
	Operating system	Windows 10 Enterprise LTSC

# III. ORDERING INFORMATION

Product Name	Package Size
WS-Q1000 Sequencing System	/
G-MK02 Flow Cell	1 piece/box
Universal Sample Preparation Reagent Kit	10 reactions/kit
Barcode Adapter Kit (10 barcodes)	10 reactions/kit
Barcode Adapter Kit (288 barcodes)	10 reactions/kit
Universal Sequencing Reagent Kit	10 sequencing runs/kit