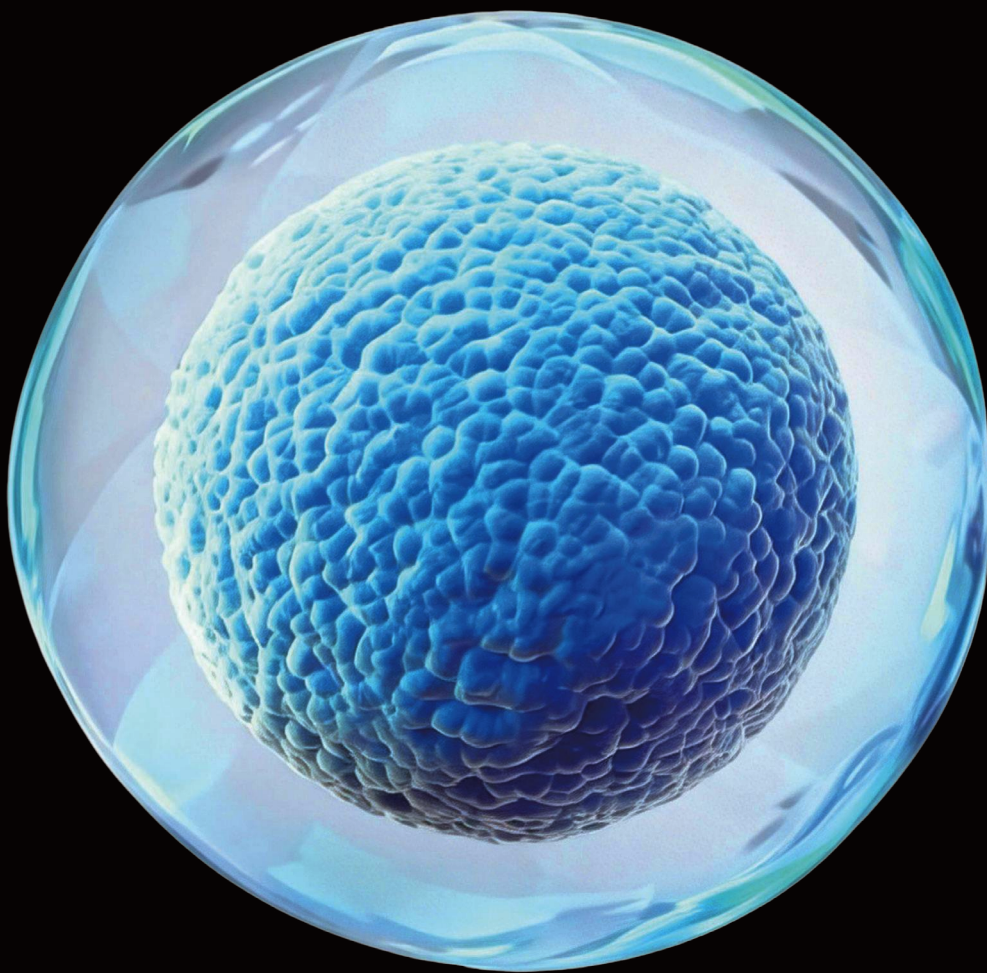


WESTERN-BLOT INTEGRATED SOLUTION

Precision Proteins, Proven Process.



Shanghai
Bioscience

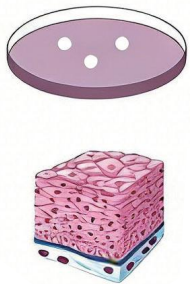
Bioscience

I. DEFINITION OF WESTERN-BLOT INTEGRATED SOLUTION

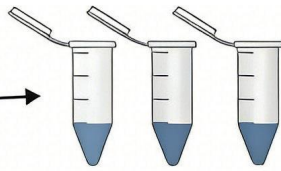
Western Blot (WB), also known as protein immunoblotting, is a classical method for detecting specific proteins in complex biological systems. The principle involves separating proteins of different molecular weights by SDS-PAGE electrophoresis, transferring them onto a solid-phase membrane through blotting technology, and specifically labeling target proteins using primary and secondary antibodies based on antigen-antibody specificity. Quantitative detection of target proteins is achieved via ECL chemiluminescence or immunofluorescence detection methods.

Bioscience provides a one-stop solution offering WB products (reagents, consumables, and instruments) from brands such as UElandy, BIOLEADER, and LABWAVE, supports customization, and also supplies related products from the Cytiva brand. Inquiries are welcome.

Tissue Collection and Cell Culture

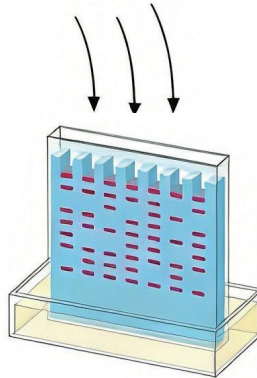


Protein Sample Preparation



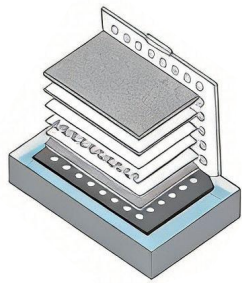
- RIPA Lysis Buffer
(Strong, no inhibitors) (R6166)
- Protease Inhibitor Cocktail
(EDTA-Free, 100× in DMSO) (P6163)
- BCA Protein Quantitative Detection Kit
(B6167, B6169 (Ready-to-Use))
- SDS-PAGE Protein Loading Buffer

Protein Loading



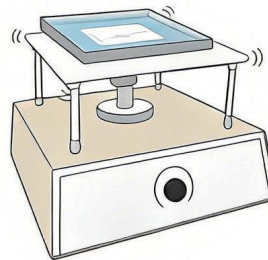
- EasyPAGE Quick One-Step Colorful Fast Gel Preparation Kit
(NS6181-NS6184)
- Precast Gel Tris-Gly (PG1001-1008, PG2001-2012)
- Protein Marker
(P6110/P8028/P6222/P6221/P6220/P6224/PM0409/PM0511)
- Protein Vertical Electrophoresis Tank
(VET-1210/1215/1410/1415)
- Electrophoresis Power Supply (EP-300/600)

Transfer



- PVDF Transfer Membrane (PF0045/PF0022)
- Western Ice-Free Rapid Transfer Buffer (10×) (W6174)
- Protein Transfer Tank (TCT-1200/1400)
- Semi-Dry Transfer System (WB-1000)

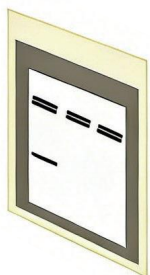
Blocking / Primary Antibody / Secondary Antibody Incubation



- Bovine Serum Albumin (B7200-B7203)
- Coomassie Brilliant Blue Rapid Staining Solution (No Destaining Required) (K8006)
- Western Blot Antibody Dilution Buffer (W6173)
- HRP-Secondary Antibody (H6161/H6162) Development
- Automated Western Blot Workstation (auto-WB)

Development

- ECL Chemiluminescence Detection Kit (NS6008/NS6009/NS6010)
- Chemiluminescence Imaging System (GE-9500)



II. SAMPLE PREPARATION



RIPA Lysis Buffer (Strong, No Inhibitors) (R6166) and Protease Inhibitor Cocktail (EDTA-Free, 100x in DMSO) (P6163) are used in combination.

They effectively extract total protein from various samples including cells, tissues, bacteria, and fungi, covering nuclear proteins, nuclear membrane proteins, cytoplasmic proteins, nuclear transcription factor proteins, and more.



BCA Protein Quantitative Detection Kit (Ready-to-Use) (B6169) paired with Medium-Binding Fully Transparent Microplate (BS6700196).

Protein content is determined by measuring the absorbance at 562 nm using a microplate reader.



SDS-PAGE Protein Loading Buffer (Denaturing, Non-Reducing, 5x) (S6168)

III. PROTEIN LOADING



Easy PAGE Quick One-Step Colorful Rapid Gel Preparation Kit (NS6182-NS6184)

One-Step Rapid Gel

Prepare multiple gels in a short time without the need for liquid sealing.

Colorful Loading, Clear Loading

Allows preparation of 4 different colors of stacking gel, facilitating sample application and differentiation between gels.

Aesthetic Bands

Uniform and tough gel structure ensures clear, sharp, and aesthetically pleasing protein electrophoresis bands, especially for small molecular weight proteins.



Plastic gel precast gel Tris-Gly 4-20%, 15 wells, 1.0mm (PG1008)

GLASS gel precast gel Tris-Gly 4-20%, 15 wells, 1.5mm (PG2012)

40 kDa	180 kDa	250 kDa	280 kDa	300 kDa	300 kDa	270 kDa	270 kDa
30 kDa	150 kDa	150 kDa	150 kDa	250 kDa	200 kDa	170 kDa	170 kDa
25 kDa	95 kDa	70 kDa	70 kDa	150 kDa	130 kDa	110 kDa	110 kDa
20 kDa	55 kDa	50 kDa	50 kDa	100 kDa	100 kDa	70 kDa	70 kDa
15 kDa	43 kDa	40 kDa	40 kDa	72 kDa	72 kDa	50 kDa	50 kDa
10 kDa	33 kDa	35 kDa	35 kDa	45 kDa	45 kDa	25 kDa	25 kDa
6.5 kDa	25 kDa	25 kDa	25 kDa	25 kDa	25 kDa	15 kDa	15 kDa
4.2 kDa	17 kDa	20 kDa	20 kDa	25 kDa	25 kDa	10 kDa	10 kDa
2.7 kDa	10 kDa	15 kDa	15 kDa	25 kDa	25 kDa	10 kDa	10 kDa
Tris-glycine [REF: P6224]	Tris-glycine [REF: P6110]	Tris-glycine [REF: P8028]	Tris-glycine [REF: P6222]	Tris-glycine [REF: P6221]	Tris-glycine [REF: P6220]	Tris-glycine [REF: P60609]	Tris-glycine [REF: P60511]



Color Prestained Protein Marker (P6110/P8028/P6222/P6221/P6220/P6224/PM0409/PM0511)

Accurate Indication

Non-prestained protein calibration ensures precise band sizing.

Clear Bands

Bright and distinct band colors with excellent separation efficiency.

Multicolor for Easy Observation

Vivid colors facilitate easy visualization and subsequent membrane trimming.

Protein Vertical Electrophoresis Tank (VET-1210/1215/1410/1415)

Large capacity

Accommodates up to 4 hand-cast gels or precast gels.

User-friendly design

Unique ultra-flat glass support at the bottom of the gel casting frame effectively prevents glass plate slippage.

Durable construction

Platinum electrode purity 99.99%, diameter 0.25 mm.

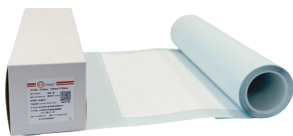
Comprehensive accessories

Includes a versatile centrifuge tube rack and glass plate holder as complimentary additions.



Electrophoresis Power Supply (EP-300/600)

IV. TRANSFER



PVDF, 0.45μm, 265mm*3750mm (PF0045)



Western No-Ice-Bath Rapid Transfer Buffer(10×) (W6174)



Semi-Dry Transfer System (WB-1000)

Protein Transfer Tank (TCT-1200/1400)

High capacity

Can hold 1-2 transfer cassettes simultaneously.

Flexible operation

Supports high-current rapid transfer or low-current overnight transfer.

Efficient cooling

Equipped with 2 built-in cooling modules that rapidly cycle to absorb buffer heat.

Durable design

Platinum electrode purity 99.99%, diameter 0.25 mm.



V. BLOCKING, PRIMARY/SECONDARY ANTIBODY INCUBATION



Bovine Serum Albumin (B7200)



Western Blot Antibody Dilution Buffer (W6173)



Automated Western Blot Workstation (auto-WB)

Coomassie Brilliant Blue Rapid Staining Solution (No Destaining) (K8006)

Simple operation

Can hold 1-2 transfer cassettes simultaneously.

Ultra-fast staining

Supports high-current rapid transfer or low-current overnight transfer.

High sensitivity

Equipped with 2 built-in cooling modules that rapidly cycle to absorb buffer heat.

Clear background

High Signal-to-Noise Ratio (SNR)

Eco-friendly

Contains no methanol or glacial acetic acid.



HRP Goat Anti-Mouse IgG (H&L)

(HRP-labeled Goat Anti-Mouse Secondary Antibody) (H6161)

VI. DEVELOPMENT

ECL Chemiluminescence Detection Kit (NS6009)

High sensitivity

Detects proteins at mid-femtogram to low-picogram levels with excellent linearity of signal response, suitable for detecting low-expression or high-value protein bands on NC or PVDF membranes.

Precise luminescence

Extremely low background signal, ideal for detecting low-abundance proteins with non-specific antibodies, accurately revealing target protein signals even under prolonged exposure.

Long-lasting signal

Under optimized conditions, substrate-incubated blot bands can emit detectable light signals for 4-6 hours, enhancing flexibility for stable detection in large-scale experiments.

Cost-effective

Optimized formulation allows for detection with very low antibody concentrations.





Chemiluminescence Imaging System (GE-9500)

HClear imaging

Features an imported high-sensitivity cooled CCD camera, large-aperture high-transmittance lens, and an F0.8 ultra-wide aperture to capture weak signals and achieve optimal imaging results.

One-click capture

Preview function allows pre-exposure; automatic exposure capture enables perfect images with a single click, fast and convenient; software includes automatic image optimization.

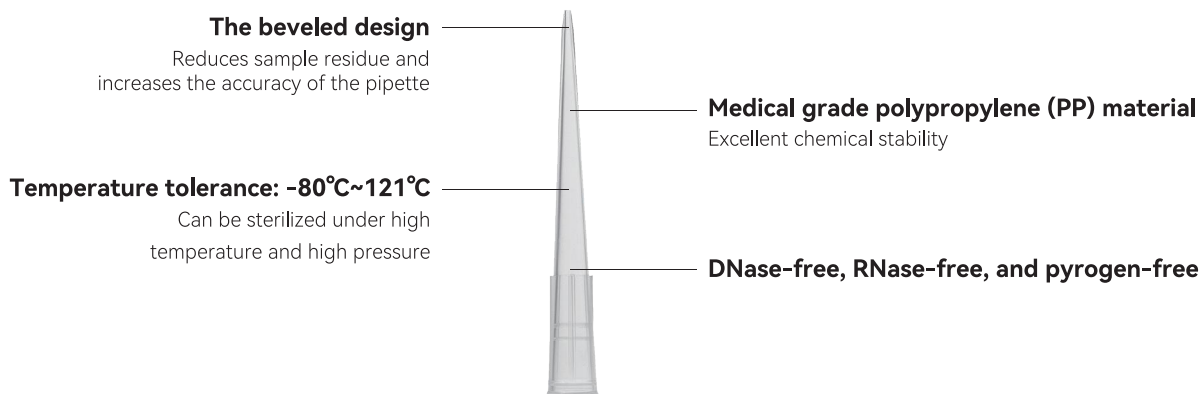
Comprehensive analysis

Software provides a range of image analysis functions such as rotation, inversion, cropping, and contrast adjustment, automatically calculating molecular weight, OD value, band intensity, and optical density.

Safe and stable

Designed with a corrosion-resistant metal dark box integrated sealed structure, anti-static and anti-interference capabilities, and a modular integrated processor to enhance safety and stability.

VII. GENERAL CONSUMABLES



Compatible with most scientific-grade pipettes | Available in 10μL, 20μL, 200μL, 300μL, 1000μL, and 5000μL volumes

SKUS	PRODUCT NAME	SPECIFICATION
BLD-BS1003010	10μL Clear Pipette Tips, Packed, Sterilized	96 pieces/box, 10 boxes/large box, 5 large boxes/case
BLD-BS1003200	200μL Yellow Pipette Tips, Packed, Sterilized	96 pieces/box, 10 boxes/large box, 5 large boxes/case
BLD-BS10031ML	1000μL Blue Pipette Tips, Packed, Sterilized	100 pieces/box, 10 boxes/large box, 5 large boxes/case
BLD-BS1007010	10μL Clear Filter Pipette Tips, Packed, Sterilized	96 pieces/box, 10 boxes/large box, 5 large boxes/case
BLD-BS1007200	200μL Clear Filter Pipette Tips, Packed, Sterilized	96 pieces/box, 10 boxes/large box, 5 large boxes/case
BLD-BS10071ML	1000μL Clear Filter Pipette Tips, Packed, Sterilized	100 pieces/box, 10 boxes/large box, 5 large boxes/case
BLD-BS1053010	10μL Clear Low-Adsorption Pipette Tips, Packed, Sterilized	96 pieces/box, 10 boxes/set, 5 sets/case
BLD-BS1053200	200μL Clear Low-Adsorption Pipette Tips, Packed, Sterilized	96 pieces/box, 10 boxes/set, 5 sets/case
BLD-BS10531ML	1000μL Clear Low-Adsorption Pipette Tips, Packed, Sterilized	100 pieces/box, 10 boxes/set, 5 sets/case

VIII. CENTRIFUGE TUBES

- Frosted cap surface for easy labeling/marketing.
- Graduated tube body with a frosted writing area on the side.
- Made of medical-grade polypropylene with excellent chemical stability.
- Temperature resistant from -80°C to 121°C, withstands centrifugal force of 14,000 ×g.

SKUS	PRODUCT NAME	SPECIFICATION
BLD-BS2031006	0.6 ml clear centrifuge tube, conical bottom, graduated to 0.6 ml, non-sterile	1000 pieces/box, 10 boxes/case
BLD-BS2001015	1.5 mL clear centrifuge tube	500 pieces/bag, 1 bag/box, 10 boxes/case, 5000 pieces
BLD-BS2001020	2.0 mL clear centrifuge tube	500 pieces/pack, 10 packs/case
BLD-BS2002500	50 mL transparent conical-bottom centrifuge tube, gray flat cap, RCF 12,000×g, sterile	25 pieces/pack, 20 packs/case
BLD-BS2002150	15 mL transparent conical-bottom centrifuge tube, gray flat cap, RCF 12,000×g, sterile	25 pieces/pack, 20 packs/case

ABOUT US

Founded in 2005, Shanghai BioScience Co., Ltd. is a platform-based service provider focused on the life sciences services sector, operating 29 offices/branches and managing over 300,000 product categories. With the mission of "Serving Science," the company has built a multi-dimensional product matrix to meet the needs of various research and production scenarios. It has established strategic partnerships with globally renowned enterprises such as Corning, Takara Bio, Danaher, and Thermo Fisher Scientific, while also maintaining close collaborations with over 20 top-tier life science brands in the industry, helping researchers achieve greater progress in the exploration of life sciences. Bioscience has become the exclusive national general distributor for Takara Bio in China.

BioScience Prime® is the collective name for the company's proprietary brands, covering four major categories: laboratory instruments, consumables, reagents, and technical services. Upholding Bioscience's consistent philosophy of innovation and dedication, BioScience Prime® leverages its self-built supply chain and technical service center to provide global life science researchers with high-quality, one-stop laboratory solutions.



BIOLEADER

Specialists in
Laboratory Plastic
Consumables
Exclusive Supplier
to Industry Leaders
for 6+ Years

Uelady®

Pioneers of
Fluorescent Dyes
in China's Biotech
Industry

LA WAVE

Next-Generation
Instruments for Cell,
Molecular, Physical
Chemistry & General
Applications

BIOSUNE

Advanced sequencing
platform

BIOPOHE

Customized Primer
Synthesis RNA
Synthesis